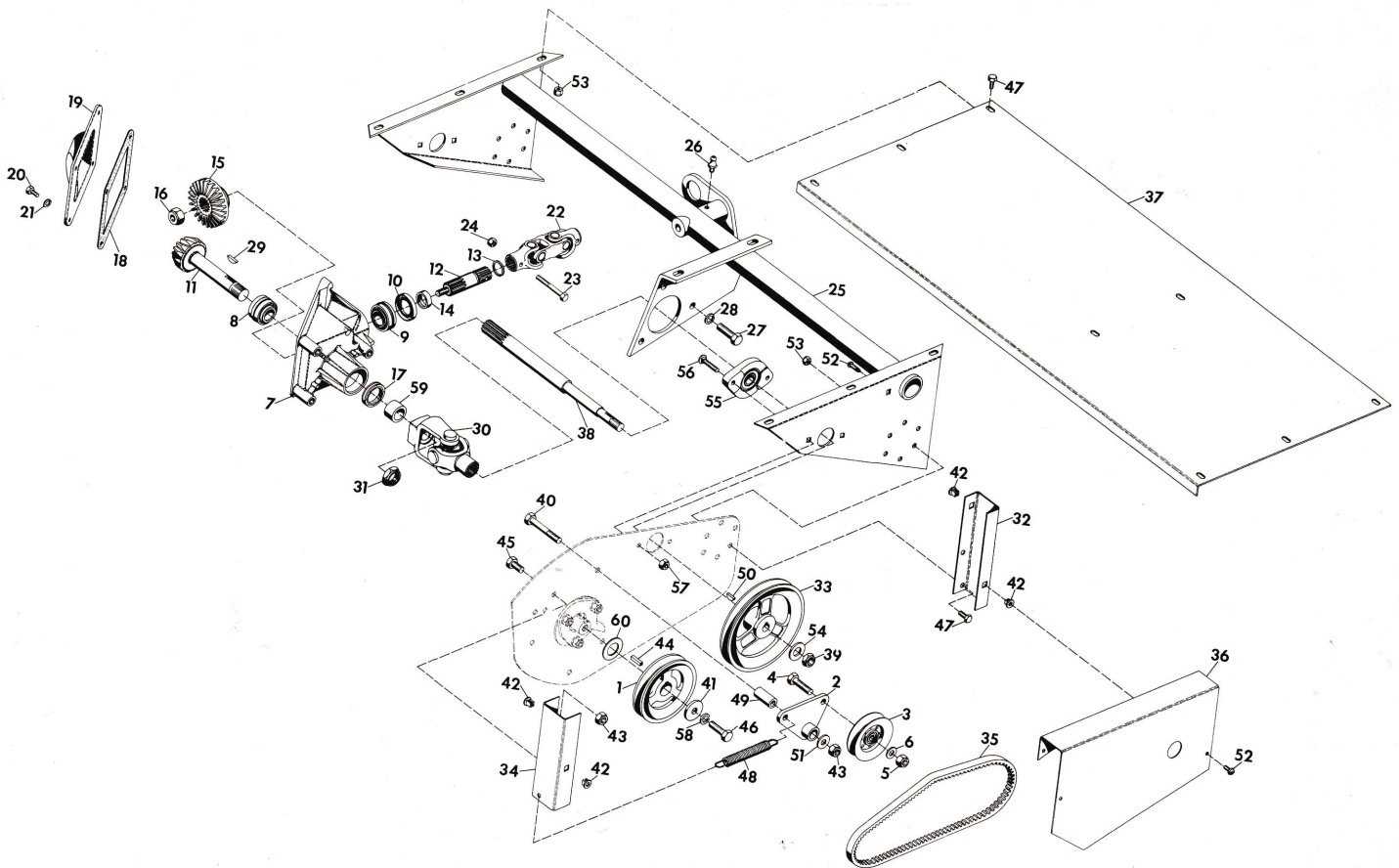


<u>Item No.</u>	<u>Part No.</u>	<u>Description</u>
1.	19365P1	Decal, Gravely
2.	18549P1	Decal, Danger
3.	9419454	Nut, Lock 1/4-20 Washer Insert
4.	120392	Washer Flat 9/32 X 5/8 x .065
5.	11977P1	Shield, Rear Deflector
6.	12058P1	Housing, Cutter
7.	180020	Bolt, Hex 1/4-20 X 3/4
8.	12060P1	Washer, Bearing Shield
9.	12062P1	Bearing, Cage
10.	12063P1	Bearing, Cutter Shaft
11.	12065P1	Retainer, Grease
12.	12086P1	Fitting, Lube
13.	120382	Washer, Lock 3/8 SP.
14.	120369	Nut, Hex 3/8-24
15.	180193	1/2-13 X 3-3/4 Hex HD Bolt
16.	9418692	Nut, Lock 5/8-11 Washer Insert
17.	11387P1	Bushing .515 X .750 X 2-19/32
18.	11386P1	Wheel, Caster
19.	19173A1	Weldment, Bushing Assembly

20.	11385A1	Fork, Caster Weldment
21.	456004	Nut, Lock 3/8-16 Washer Insert
22.	11959A1	Skid, Weldment
23.	181637	Bolt, Hex 3/8-24 X 1
24.	180122	Bolt Hex 3/8-16 X 1
25.	12059P1	Shaft, Cutter
26.	12067P1	Pin, Knife
27.	12066P1	Knife
28.	177923	Pin, Cotter 1/8 X 3/4
29.	12064P1	Cap, Bearing
30.	137204	Pin, Cotter 1/8 X 1 1/2
31.	131017	Washer Flat 13/16 X 1-15/32 X .134
32.	11375P1	Bearing, Bronze .751 X .877 X 3/4
33.	20107P1	Rod
34.	120238	1/2-13 Hex Nut
35.	9411027	Fitting, Lube 1/4-28



ITEM
NO.

PART NO.

DESCRIPTION

1	11962P1	Sheave, 2 1/32 x 5.25
2	12068A1	Arm, Idler Pivot Weldment
3	12070P1	Idler
4	180127	Bolt, Hex 3/8-16 x 1-5/8
5	456004	Nut, Lock 3/8-16 Washer Insert
6	120394	Washer, Flat 13/32 x 13/16 x .065
7	14636P1	Casting, Gear Box
8	14644A1	Bearing Assembly .7500 x 1.7810 x 1.4990
9	14640A1	Bearing Assembly 1.0000 x 1.9800 x 1.2430
10	14646P1	Seal, Oil 1-1/4 x 1-63/64 x .437
11	19608P1	Shaft, Gear Pinion
12	20016P1	Shaft, Drive
13	14642P1	Ring, Retaining Reliance Eaton
14	14641P1	Spacer, Ring
15	19607P1	Gear, Bevel
16	456007	Nut, Lock 3/4-10 Washer Insert
17	14645P1	Seal, Oil 1-1/4 x 1-11/16
18	11231P2	Gasket, Gear Housing
19	10982P1	Cover, Gear Housing
20	180016	Bolt Hex 1/4-20 x 1/2
21	120380	Washer, Lock 1/4 SP

<u>ITEM NO.</u>	<u>PART NO.</u>	<u>DESCRIPTION</u>
22	11967P1	Double Joint Assembly
23	180044	Bolt Hex 1/4-20 x 2
24	9419454	Nut, Lock 1/4-20 Washer Insert
25	20098A1	Support, Tube Weldment
26	9411027	Fitting, Lube 1/4-28
27	180173	Bolt, Hex 1/2-13 x 1
28	120384	Washer, Lock 1/2 SP
29	431787	Key, Woodruff 3/16 x 5/8 Hard No. 61
30	20105P1	Joint, Universal
31	20106P1	Nut, Lock 3/4-10 M-F Nylon Insert
32	11974P1	Channel, Rear
33	12074P1	Sheave 21/32 x 7.25
34	12076P1	Channel, Front
35	12077P1	Belt, V Cog 21/32 x 7/16 x 40.9
36	11976P1	Cover, Belt
37	20110P1	Shield
38	20108P1	Shaft
39	13412P1	Nut, Lock ESNA 5/8-18 Light Thin
40	180134	Bolt, Hex 3/8-16 x 2-1/2
41	12106P1	Washer, Retaining
42	11777P1	Grommet, Plastic
43	456004	Nut, Lock 3/8-16 Washer Insert
44	9213P1	Key, Square 1/4 x 1
45	180120	Bolt, Hex 3/8-16 x 3/4
46	181637	Bolt, Hex 3/8-24x1
47	180020	Bolt Hex 1/4-20 x 3/4
48	11263P1	Spring Ext Type 5 1/2 x .50 x 20 Rate
49	12071P1	Bushing, .406 x .750 x 1.656
50	124549	Key, Woodruff 3/16 x 3/4 Hard No. 9
51	120388	Washer, Flat 7/16 x 1 x .083
52	167260	Screw Tapping 1/4-20 x 5/8 Pan HD
53	9419454	Nut, Lock 1/4-20 Washer Insert
54	131016	Washer Flat 21/32 x 1-5/16 x .095
55	12409P1	Bearing, Flange
56	126373	Bolt 5/16-18 x 1-1/2 RD HD SQ NK
57	9419455	Nut, Lock 5/16-18 Washer Insert
58	120382	Washer, Lock 3/8 SP
59	20542P1	Spacer, .752 x 1.252 x .690 Hard
NS	12134P1	Kit, Repair Universal Joint Rockwell Std.
NS	20573P1	Kit, Repair Universal Joint Neapco 1605X
60	20798P1	Spacer, Pulley

TO USE THIS MOWER WITH TRACTOR MODEL NOS. 424, 430, 432 OR 450
OR TO USE THIS MOWER WITH FRONT MOUNT KIT, 15569E1, CUT OFF
SHAFT AS SHOWN.

